

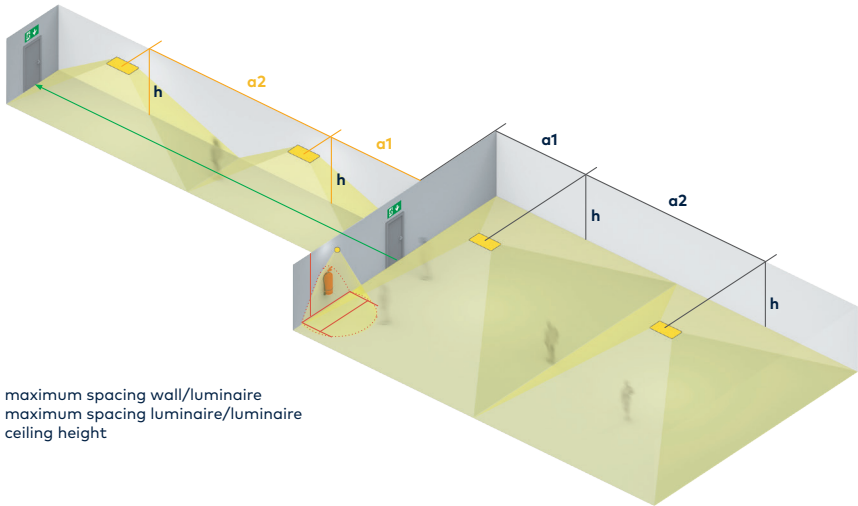
# Voyager

## Style



www.thornlighting.com/VYST

The ultra-slim emergency luminaire



**a1** = maximum spacing wall/luminaire  
**a2** = maximum spacing luminaire/luminaire  
**h** = ceiling height

### VOYAGER STYLE ANT ECS

h	antipanic (0,5 lx)	
	a1	a2
2,50	3,10	9,30
3,00	3,25	10,05
3,50	3,45	10,85
4,00	3,50	11,45
4,50	3,20	11,85
5,00	3,15	12,35

### VOYAGER STYLE ESC ECS

h	escape (1 lx)	
	a1	a2
2,50	7,40	18,35
3,00	8,10	19,60
3,50	8,55	20,95
4,00	8,85	22,40
4,50	7,50	23,50
5,00	*	23,25

All values in metres, all values for  $t_a = 30\text{ }^\circ\text{C}$ , maintenance factor = 0.8

\* Determine a1 figure by means of lighting calculation (taking adjacent luminaires into account)