

Voyager One

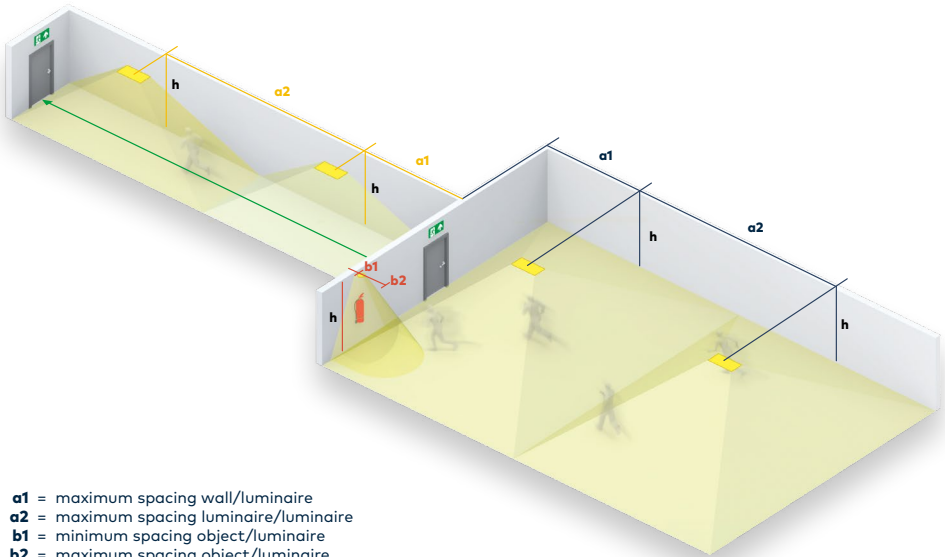
96631599/96631600

VOYAGER ONE MS ANT ECC/ECS WH IP65

without lens



www.thornlighting.com/VOYO



- a1** = maximum spacing wall/luminaire
- a2** = maximum spacing luminaire/luminaire
- b1** = minimum spacing object/luminaire
- b2** = maximum spacing object/luminaire
- h** = ceiling height

h	antipanic (0,5 lx)		antipanic (1 lx)	
	a1	a2	a1	a2
2,50	3,40	9,90	2,75	8,20
3,00	3,65	10,75	2,90	8,90
3,50	3,85	11,55	3,05	9,55
4,00	4,05	12,25	3,10	10,10
4,50	4,20	12,95	3,15	10,55
5,00	4,30	13,55	3,10	10,95
6,00	4,40	14,60	2,95	11,60
7,00	4,40	15,45	2,55	12,10
8,00	4,25	16,15	1,85	12,35
9,00	4,00	16,70	*	12,50
10,00	3,55	17,15	*	12,35

a1/a2 spacing values valid for longitudinal and transversal axis of luminaire
 All values in metres, all values for $t_a = 30^\circ\text{C}$, maintenance factor = 0,8

*Determine a1/a2/b1/b2 figure by means of lighting calculation (taking adjacent luminaires into account)